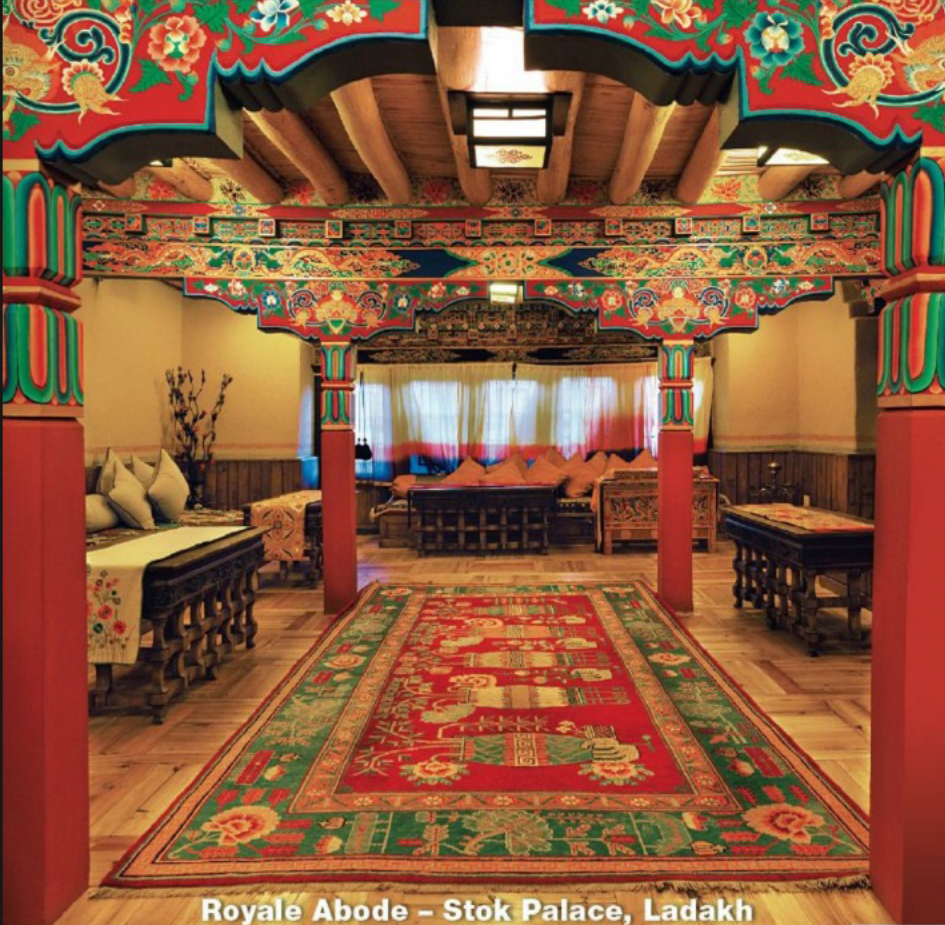


RNI No. 9194/77 Reg. No. MCS/124/2016-20 Date of Publication: 1st of every month. Posted at Patil's charged Sorting office, Mumbai-400001 on 3-10 and 16th of every month.

# Inside Outside

THE INDIAN DESIGN MAGAZINE | www.insideoutside.in | ISSUE 398 | OCTOBER 2018 | ₹100



Royale Abode - Stok Palace, Ladakh



68



74

## 96 OFFICE POSITIVE ENERGY, AT WORK

There are offices and there are offices. Ankita and Pratyosh of Studio An-V-Thot Architects have created one that is meant to perk up the spirits of employees, one and all. With cheery highlights, loads of light and lots of plants, should we go so far as to say it ended up being just the place to work to?

Text: Arthy Muthanna Singh Photographs: Avneesh Kumar

## 104 INDIANS ABROAD A STONE COTTAGE IN AN EXUBERANT GARDEN

The accomplished couple, Anuradha Deolalikar and Subodh Mathur's, 1890s home, is a charismatic expression of their personalities.

Text: Amita Sarwal Photographs: Subodh Mathur

## 116 RESIDENCE A RUSTIC MODERN IDIOM

Bangalore-based interior designer Ranjani S has enjoyed designing her home by integrating rustic and modern elements.

Photographs: Nayan Soni

## 128 CAFE A CAFÉ FOR ALL

Aurangabad-based architect Abhidha Shah Vaidya integrates three stores to design a warm and inviting café

Photographs: Nitin Mahjan



The spacious living room has an accent wall (top) that is surfaced with four coloured natural stones.





The living room integrates elements of rustic and modern styles.

Home is everything for us' says Ranjani S, founder, Interiors by Ranjani (IBR Designs), Bangalore. A practising interior designer since 2005, Ranjani established her studio in 2013 and has designed several homes and show houses in the course of her career that have brought her appreciation and fulfilment. And when the family bought a 1508 sq ft three-bedroom apartment last year, she was ecstatic at the prospect of designing her own home!

**A Blend of Two Styles**

Having worked on interiors in a distinct modern, contemporary, traditional or rustic style, Ranjani was very keen to integrate elements of rustic and modern styles to create the design template for her home. Going through the apartment after acquiring it, she visualized changes that would transform it into a brighter and more colourful space with a distinct identity. She thought a judicious combination of wood, wood veneer and natural stone (that are identified with a rustic look) along with straight line furniture of spotlights and contemporary-style chandeliers (that spell modernity) would blend the two styles nicely.

Identifying and sourcing materials from natural stone for an accent wall in the living room to a large tree trunk for the 6'6" by 3'6" single section dining table; getting glass back painted in a unique copper colour for the kitchen cabinets; bringing in a partition between the dining area and



kitchen: creating a colourful room for her five-year old son who loves cars and colours; and designing handle-less cabinets and wardrobes for ample yet unobtrusive storage, Ranjani spared no time or effort in putting her ideas into reality. Her efforts paid off as the family loved the look, and visitors often ask her if the

layout of this flat is the same as the others in the building as it looks so different!

**Blending Design and Function**

The personality of the home is manifest right at the main entrance with its customized wooden door with a raw wood veneer and embedded

black painted iron bars. Stepping in is a compact foyer edged on the inner side with a wall unit surfaced with textured grey duco paint. The unit barely reveals the storage space within it due to its surface patterned with a play of rectangles along with the absence of handles.

The lower storage section

continues into the spacious living room, linking the spaces, where sofa seating along the walls and natural light from the adjoining balcony instantly create a sense of space. Adding a rustic touch to the room are light brown ceiling rafters and catching the eye is an inset accent wall surfaced with four coloured



The dining area, set in the heart of the home, has been brightened by surfacing the ceiling with an acrylic mirror sheet that reflects light and space. It thus creates the effect of a voluminous ceiling.





#### FACT FILE

##### Typology

Residence

Location

Bangalore

##### Built up area

1508 sq ft

Client

Self

##### Design firm

Interiors by Ranjani

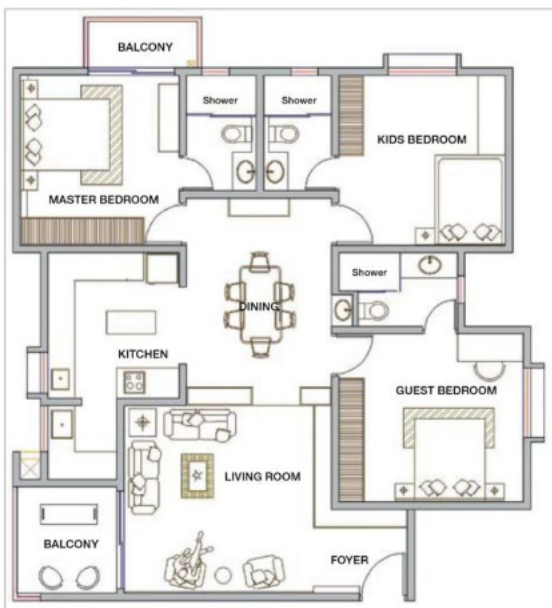
(IBR Designs)

##### Designer

Ranjani

##### Completion

August 2017



natural stones, cut into different sizes and shapes, and set in a meandering pattern.

Space flows into the adjoining dining area that was originally open; however, Ranjani worked out a partition wall between the two spaces to give the dining area privacy. Wishing to add function to the wall she created a display-cum-crockery cabinet on its dining area side. On the other side of the entry to the dining area she created a compact pooja area with a double-folding door and a jali panel. A backlit glass sheet with onyx pebbles affixed on it was fitted on the wall behind the idols; light passing through the sheet and onyx stones create a decorative backdrop giving the space a soothing aura.

The dining area, set in the heart of the home, has doors for the three bedrooms (master, kids and guest) and is contiguous with the kitchen. Being windowless it could have become a bit dark, yet Ranjani ingeniously addressed this predicament by surfacing the ceiling with an acrylic mirror sheet that instantly brightens the space by reflecting light and space, and thus creates the effect of a voluminous ceiling.

#### A Sense of Individuality

Each of the rooms as well as the kitchen set next to the dining area were given an individual style in terms of colour and expression, yet care was taken to ensure they would be part of a cohesive whole. The master bedroom, done up in a minimal palette of brown-black-white, enjoys a relaxed ambience. It has a



The master bedroom is done up in a minimal palette of brown-black-white using black lacquered glass, natural veneer and white paint for the walls. The attached bathroom is designed in the same palette as that of the room.





double bed with a bed back of black lacquered glass, a large wardrobe with sliding doors (in a combination of lacquered black glass and natural veneer), a compact unit for cosmetics behind a slim full-length mirror, and a floating work table with wall units.

The guest bedroom – done up in natural brown veneer and lacquered white glass with a double bed, wardrobe and floating table – is simple and neat. And the

young son's room is a burst of energy with colour block panels and shelves, a fabric curtain printed with colourful cars, a study counter with a table beneath it that slides out when required and a snug bay window (with a marker board for him to draw) thus minimizing floor furniture. Each of the bedrooms has an attached bathroom that is an extension of the design of the room.

The kitchen is a study in functionality with neat lines, easy to

maintain counters and cabinet surfaces, and ample storage. An island table on wheels, with closed and open shelves, functions as a convenient breakfast counter. A pendant lamp above the island table, spotlights and concealed strip lighting offer adequate light, highlight the copper-painted glass affixed on the cabinet shutters and give the space a lovely mood without taking attention away from the adjoining dining area.

**The guest bedroom, done up in natural brown veneer and lacquered white glass, is simple, neat, functional and comfortable.**



The kid's room is a burst of energy with colour block panels and shelves, and a fabric curtain printed with colourful cars. The kid's bathroom also has colourful elements.

